

Lithium BMS  
Support

MPP SOLAR  
NOW  
SUPPORTS\*



BMS  
SYSTEM



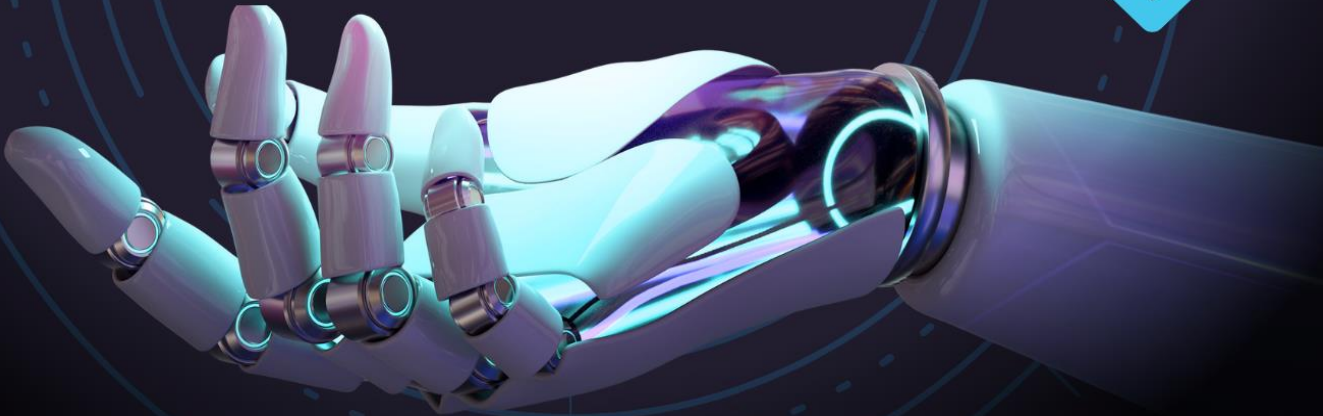
BATTERY-BOX  
PREMIUM LVS



BATTERY-BOX  
PREMIUM LVL



BATTERY-BOX  
LV FLEX LITE



*\*Current support to BYD BMS is limited to CANbus and on the 3 specified BYD battery models only. This new feature will be gradually implemented on all major MPP Solar OFF-GRID 48V models starting in Nov 2024. 24VDC systems are not applicable at this time due to BYD's current product design only in 48VDC. BMS communication will require a BMS cable matching pinouts to both inverter and battery end, and this is not supplied by MPP Solar. Details to this feature may be subject to change without prior notice.*

SALES@MPPSOLAR.COM | WWW.MPPSOLAR.COM | TAIWAN

**MPP Solar**  
Buying Solar should be this easy